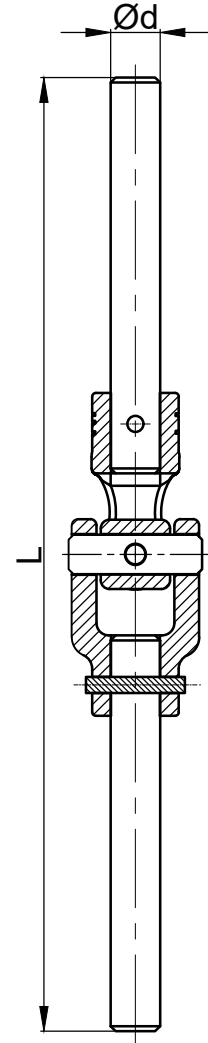
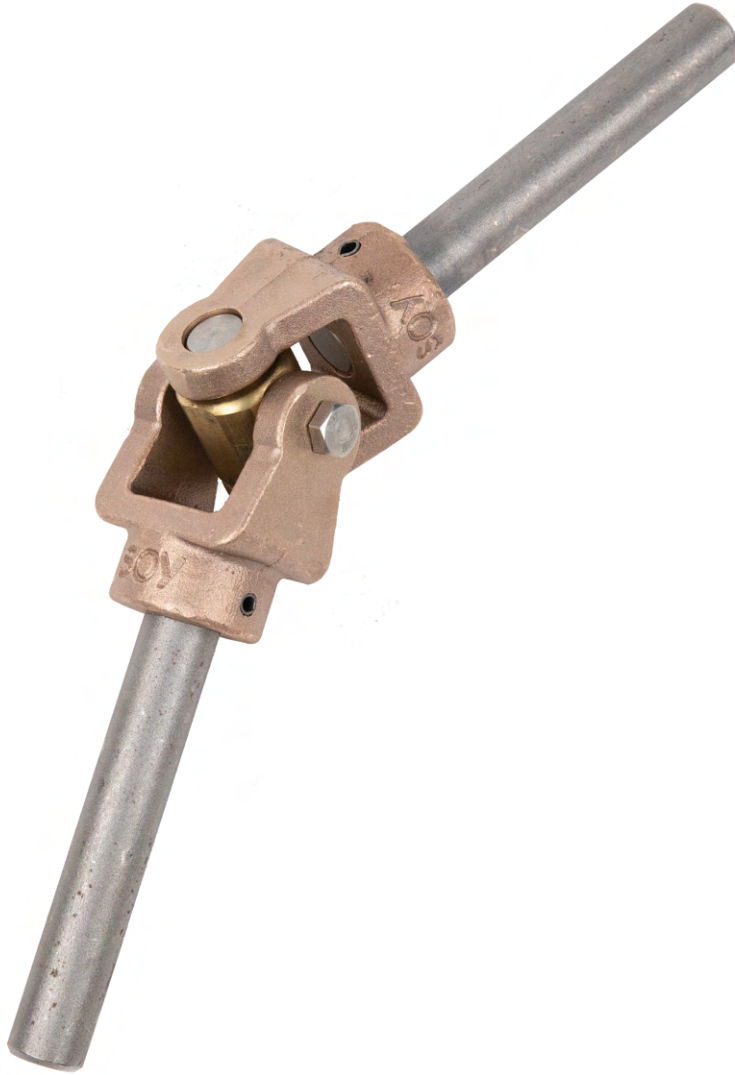


## Mafsals / Joint



NO	PARÇA ADI	PART NAME	MALZEME / MATERIAL
1	GÖVDE	BODY	RG5
2	MİL	STEM	SAE 1040
3	PİM	PIN	SAE 1040
4	TUTUCU KÜP	CUBE	CuZn39Pb3
5	MERKEZLEME PİMİ	CENTER PIN	AISI 304
6	ÇİVATA & SOMUN	BOLT & NUT	AISI 304

ÖLÇÜ	DIMENSION	Ød	L	KG
KÜÇÜK BOY MAFSAL	SMALL JOINT	20	375	2,75
BÜYÜK BOY MAFSAL	LARGE JOINT	25	435	4,35